

COREtec®

FLOORS

# PRO-PLUS

Where style meets strength



EN

SK - PL - RU - HU - CZ - LT

# Why **choose** a COREtec<sup>®</sup> floor?



## 1 Warm feeling thanks to our cork backing

All our floors have a unique attached cork underlayment. Why? It's warmer, quieter and easily installs over existing hard surfaces, perfectly concealing imperfections in subfloors.

And: it's one of the most sustainable materials out there. Cork is harvested from the cork tree and can be re-harvested every decade without damaging the tree.

## 2 Easy to maintain

Cleaning our floors is child's play. Thanks to our high performance wear layers, COREtec<sup>®</sup> floors are easy to clean and easy to maintain.

Spilled something? No worries, you can easily clean it up, using your floor cleaner or our recommended Coretec<sup>®</sup> Cleaning Kit.



## 3 100% waterproof floors

Our floors are 100% waterproof, kid proof & pet proof. Try them in your kitchen or bathroom: they won't warp or buckle, even if submerged in water.

Our 100% waterproof core, resilient vinyl and protective wear layer will keep your floor looking good for the life of your home. So naturally, all COREtec<sup>®</sup> floors come with a limited lifetime residential warranty.

## 4 Time saving solution

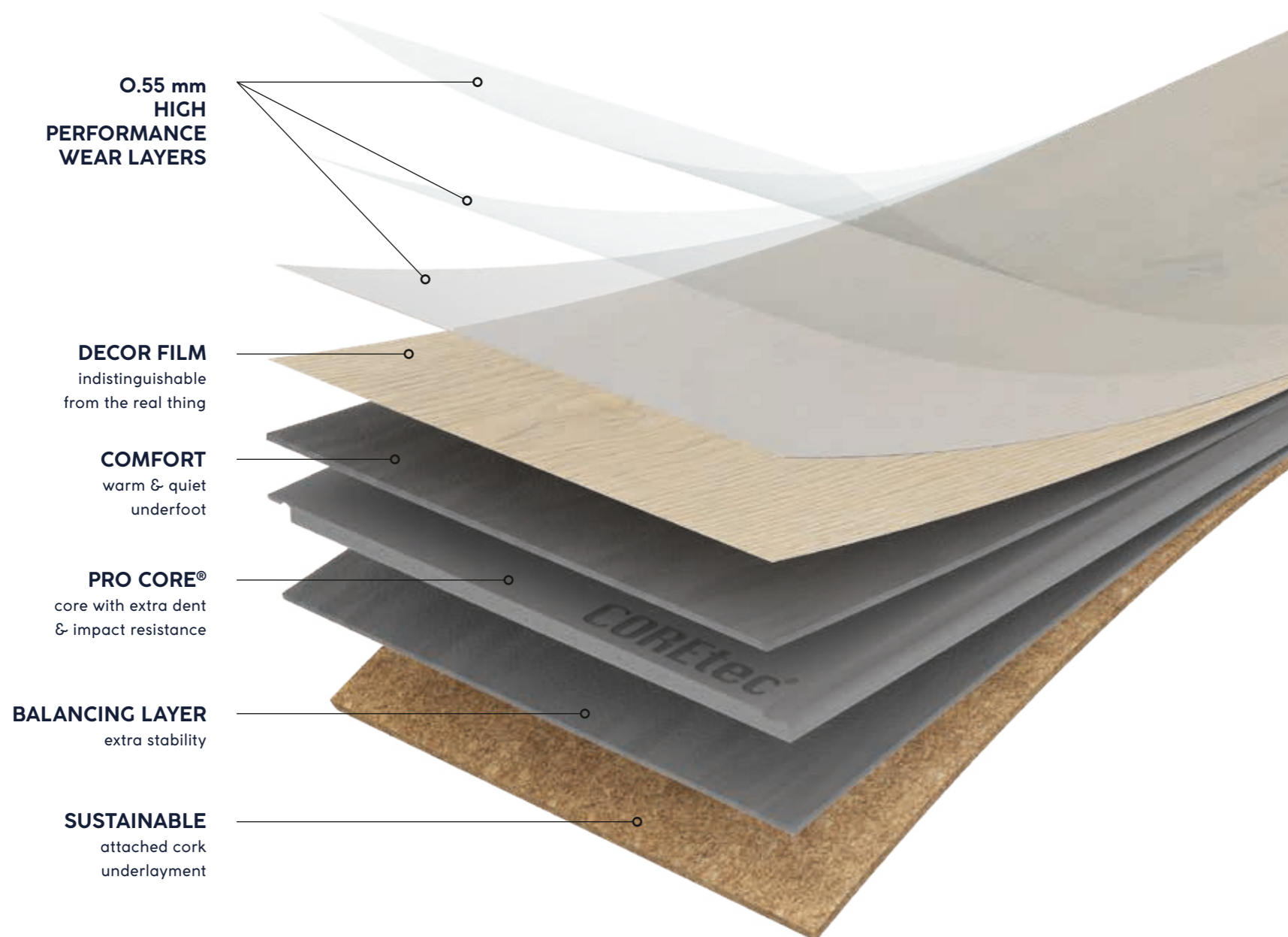
COREtec<sup>®</sup> is easy to install, to care for and to live with. Its secure angle tap system doesn't require any glue or nails and can be installed over existing floors without additional underlayment.

Forget about sanding, polishing, sealing or refinishing: our floors are maintenance-free.



PRO CORE® - 5 mm

# The original 100% waterproof floor, with extra dent & impact resistance



0.55 mm  
HIGH  
PERFORMANCE  
WEAR LAYERS

DECOR FILM  
indistinguishable  
from the real thing

COMFORT  
warm & quiet  
underfoot

PRO CORE®  
core with extra dent  
& impact resistance

BALANCING LAYER  
extra stability

SUSTAINABLE  
attached cork  
underlayment



## 100% waterproof

100% Vodeodolná - 100% Wodoodporna - 100% водостойкое - 100% vízállóság - 100% voděodolná podlaha - 100% vandeniui atsparios grindys



## Extremely stable

Extrémne stabilný - Wyjątkowo stabilna - чрезвычайно стабильный - Extrém stabilitás - Extrémni stabilita - Ekstremalus stabilumas



## No acclimatisation necessary

Nevyžaduje sa aklimatizácia - Nie jest wymagana aklimatyzacja - Не требуется акклиматизация - Nincs szükség aklimatizálásra lerakás előtt - Aklimatizace není třeba - Nereikia aklimatizacijos



## Easy to install

Jednoduchá inštalácia - Łatwy i szybki montaż - Легкая укладка - Könnyen lerakható - Snadná montáž na klik - Lengva montuoti



## Installation on any surface

Inštalácia na akýkoľvek povrch - Montaż na każdej powierzchni - Укладка на любую поверхность - Bármilyen felületre lerakható - Instalace přímo na stávající podlahy - Montavimas ant bet kokio paviršiaus



## Reduces noise

Znižuje hluk - Zmniejsza hałas - Сокращает шум - Hangcsökkentő - Redukce zvuku - Garso mažinimas



## Wear resistant

Odolné voči opotrebovaniu - Odporna na zużycie - износостойкий - Korásálló - Odolný proti opotřebení - Atsparus nusidėvėjimui



## Pet proof

Odolná proti zvieratám - Przystosowany dla zwierząt domowych - Защита от домашних животных - Háziállatálló - Odolnost vůči zvířatům - Atsparumas gyvūnams



## Electrostatic performance

Elektrostatické prevedenie - Akumulacja ładunków elektrostatycznych - Электростатичность - Antisztatikus - Elektrostatické vlastnosti - Elektrostatinis veikimas



## Ideal for underfloor heating & cooling

Vhodná na podlahové vykurovanie a chladenie - Nadaje się do ogrzewania i chłodzenia podłogowego - Подходит для полов с подогревом и охлаждением - Padlófűtés/hűtés esetén is alkalmazható - Vhodné pro podlahové vytápění/chlazení - Tinka grindiniam šildymui ir vėsimumui

# Floors for high demands

ProPlus doesn't need intricate designs to make a statement. Its minimalist aesthetic has a unique charm of its own and directs attention to what truly matters: its exceptional durability.

Where style meets strength



**PRO-PLUS**

## 1200 MB

1220 x 183 mm

5,00 mm

0,55 mm

12 pcs  
2,68 m<sup>2</sup>  
± 22 kg

## 1500 4V

1520 x 183 mm

5,00 mm

0,55 mm

10 pcs  
2,78 m<sup>2</sup>  
± 23 kg

## 1200 MB E

1220 x 183 mm

5,00 mm

0,55 mm

12 pcs  
2,68 m<sup>2</sup>  
± 22 kg

## TILE 4V

610 x 472 mm

5,00 mm

0,55 mm

10 pcs  
2,88 m<sup>2</sup>  
± 24 kg





1200 MB

**COMCAST**

50 RLV 1201  
1220 x 183 x 5 mm



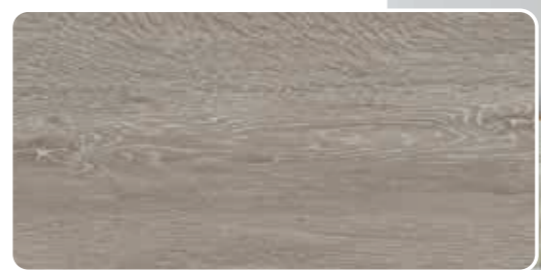
1200 MB

**ORIENTAL**

50 RLV 1202  
1220 x 183 x 5 mm



IMPERIAL  
50 RLV 1207



1200 MB

**KRONOS**

50 RLV 1203  
1220 x 183 x 5 mm





1200 MB

### CENTURY

50 RLV 1204  
1220 x 183 x 5 mm



1200 MB

### BELLAGIO

50 RLV 1220  
1220 x 183 x 5 mm



1200 MB

### IMPERIAL

50 RLV 1207  
1220 x 183 x 5 mm





MULTICOLOUR EFFECT

1200 MB

### EXCALIBUR

50 RLV 4557  
1220 x 183 x 5 mm



1200 MB

### PALAZZO

50 RLV 4651  
1220 x 183 x 5 mm

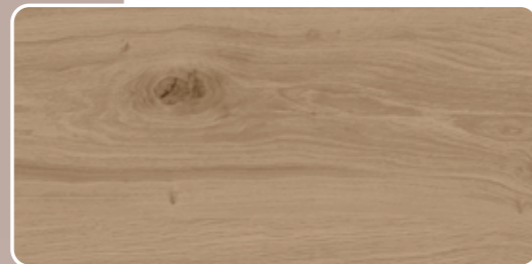


1200 MB E

### MANDELAY

50 RLVR 4352  
1220 x 183 x 5 mm

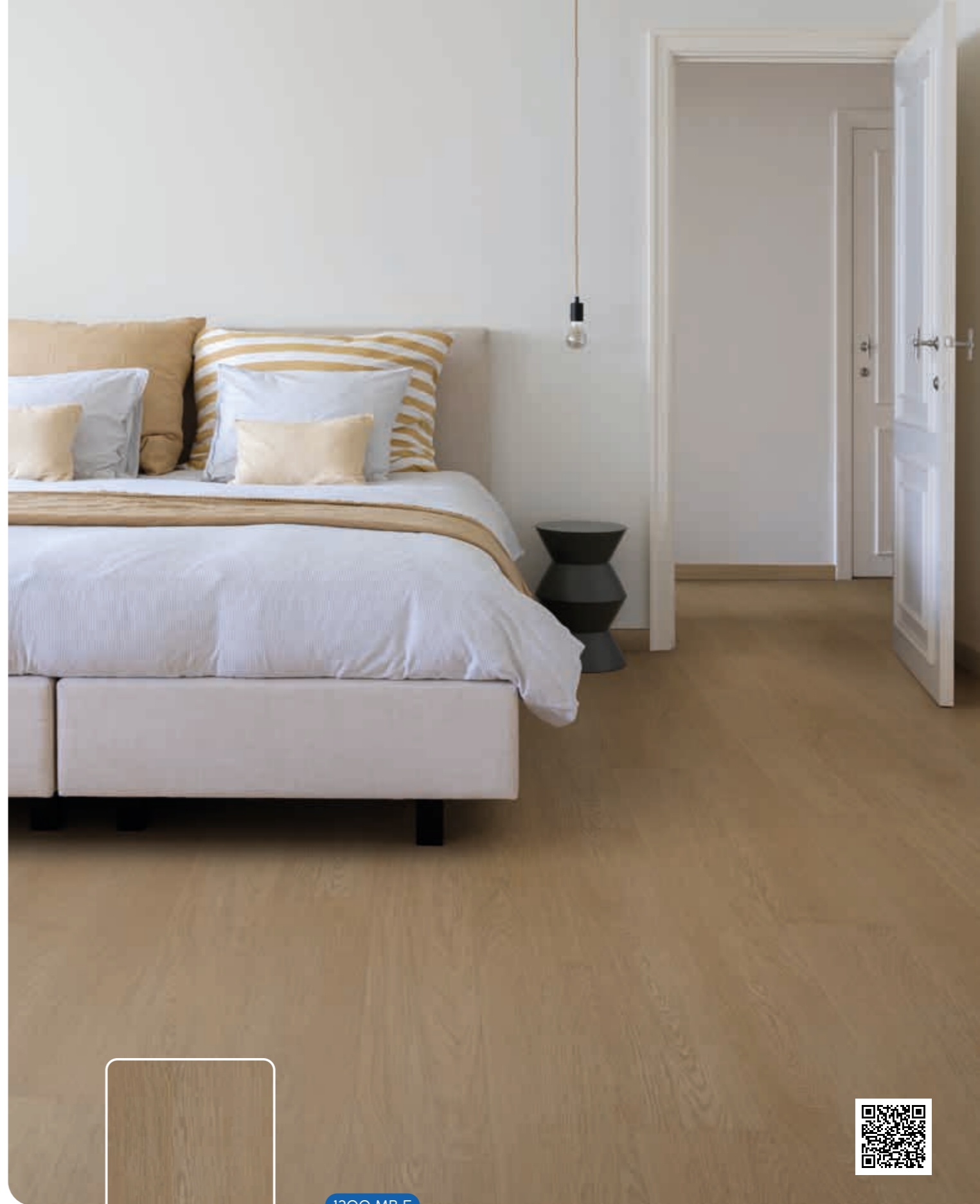




1200 MB E

### VENETIAN

50 RLVR 4356  
1220 x 183 x 5 mm



1200 MB E

### RIO

50 RLVR 4455  
1220 x 183 x 5 mm



1200 MB E

### WYNN

50 RLVR 4416  
1220 x 183 x 5 mm



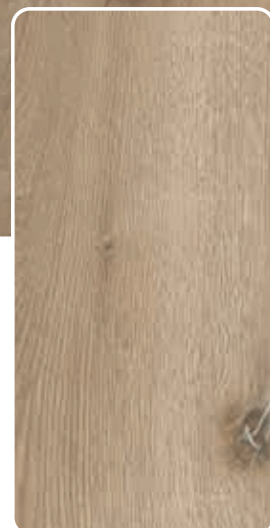




1500 4V

### PIANO

50 RLVE 1213  
1520 x 183 x 5 mm



1500 4V

### METROPOL

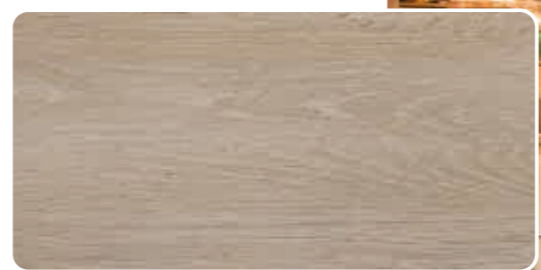
50 RLVE 1216  
1520 x 183 x 5 mm



1500 4V

### MIRAGE

50 RLVE 1218  
1520 x 183 x 5 mm





TILE 4V

### KINGDOM

50 RLVE 1228  
1520 x 183 x 5 mm



TILE 4V

### CRISTAL

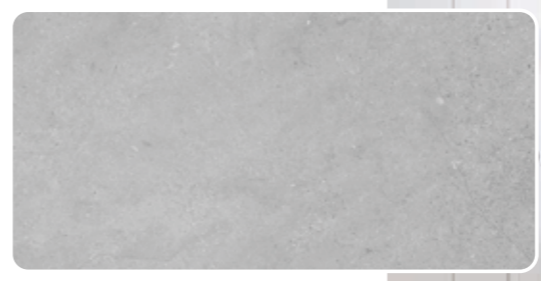
50 RLVE 4191  
610 x 472 x 5 mm

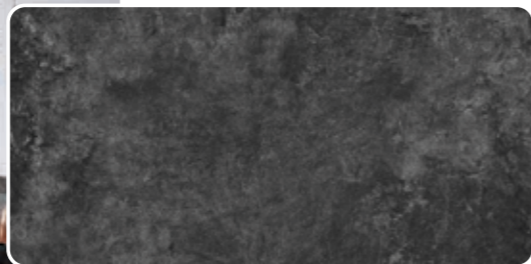


TILE 4V

### STRATOSPHERE

50 RLVE 4193  
610 x 472 x 5 mm

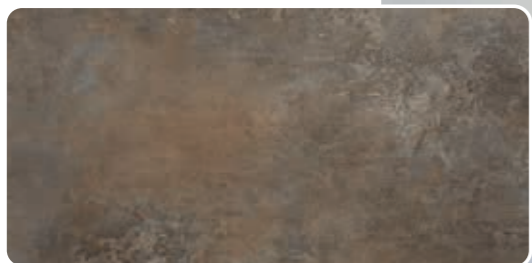




TILE 4V

## MILLENNIUM

50 RLVE 4298  
610 x 472 x 5 mm



TILE 4V

## TROPICANA

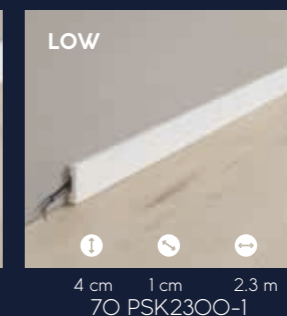
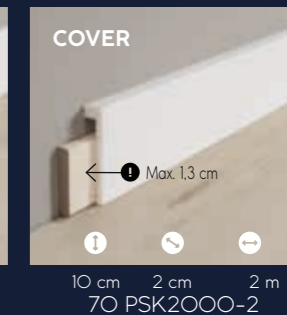
50 RLVE 4767  
610 x 472 x 5 mm



## Accessories

### Paintable skirtings

Our paintable skirtings are 100% waterproof and shock resistant.

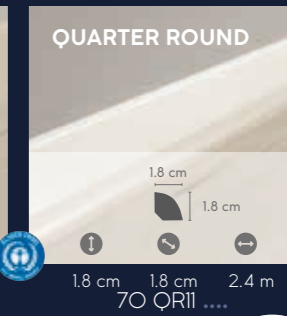
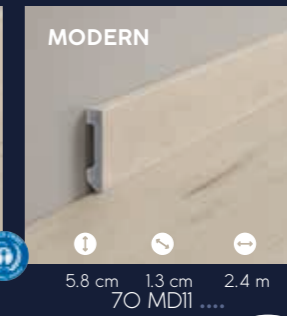
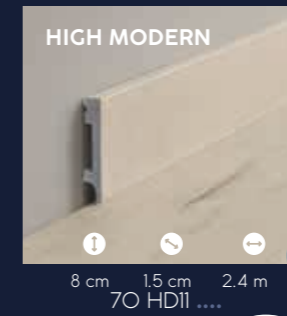


Discover all accessories

### Matching design accessories

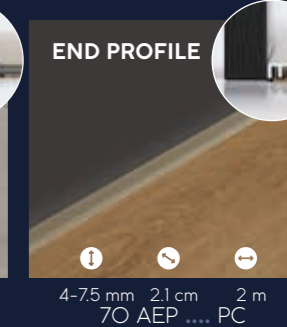
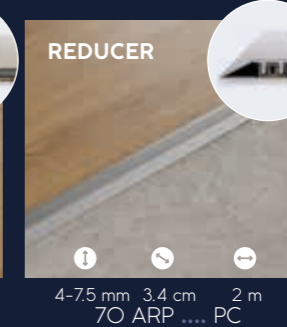
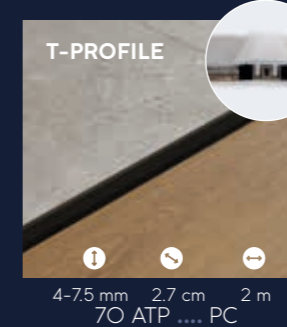


.... = Matching design reference



### Aluminium profiles

- 2001 Matte black
- 2002 Brushed aluminium
- 2003 Champagne bronze



## Installation

### Easy installation

COREtec® floors have the easiest install on the market.

Watch our installation video on our website [www.coretecfloors.com](http://www.coretecfloors.com), or by scanning the QR code.



## Maintenance

### The COREtec® Clean, quick & green kit:

- Daily cleaner
- Deep cleaner
- Stain remover



80 CCS 3400



# It's in our *cove* to adore nature



## Our commitments

-  **Choose me once, love me for life**  
We believe in a world where things last! For a lifetime, and longer. That's good for you, and also for the planet. So our products carry a lifetime guarantee for domestic use, and a 10-year guarantee for commercial use.
-  **Breathe healthy air**  
The GreenGuard Gold certification is recognised as one of the most stringent in the world, going beyond the A+ rating for indoor air quality. This means that your floor contributes to the healthiest environment for working and living, and protects the most sensitive people.
-  **Sustainable cork underlay**  
Cork is a highly durable material. It retains its natural springiness even after years of use, while woods planted with cork oak reduce CO<sub>2</sub> emissions.
-  **We can prove it**  
Don't take our word for it, look at the proof! COREtec® meets the standards for numerous quality labels and certificates. Our floors are free of heavy metals (such as lead) and phthalates.
-  **Second Life**  
So you're changing your floor? Why not give the old COREtec® floor a second life! You can gift your old floor via Second Life Floors. Because your old floor is perfectly fine to start a new story in a new location.
-  **Do your bit for forest conservation**  
There is no wood in a COREtec® floor. So no trees are cut down to make your home beautiful. More than that: we are active in forest conservation, worldwide.



COREtec® floors are  
**that good, somebody else**  
can re-*enjoy* it.

Learn how your COREtec® floor gets a second life.



COREtec®, the natural choice



Warranty (years) The warranty covers manufacturing defects and premature wear in the event of normal use.  
 Záruka (rok) Záruka sa vzťahuje na výrobné chyby a predčasné opotrebenie v prípade bežného používania.  
 Termin gwarancji (rok) Gwarancja obejmuje wadyfabryczne i przedwczesne zużycie w przypadku normalnego użytkowania.  
 Гарантия (лет) Гарантия покрывает производственные дефекты и преждевременный износ при нормальном использовании.  
 A garancia gyártási hibákra és idő előtti elhasználódásra általános használatnál érvényes.  
 Záruka (rok) Záruka se vzťahuje na vady z výroby a predčasné opotrebenie v prípade bežného používania.  
 Carantija (Metai) Carantija taikoma gamybos trūkumams ir per greitam nusidėvimui eksploatuojant normaliomis sąlygomis

**COREtec**<sup>®</sup>  
FLOORS



Souverainestraat 27 - 9770 Kruisem (Belgium)  
info@usfloors.be · www.coretecfloors.com