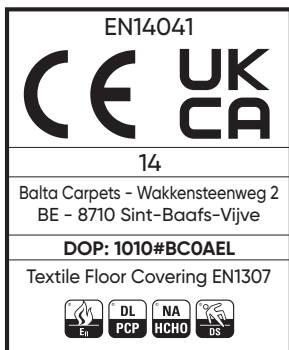


Nature Rainbow Parrot 8201

Construction and Gauge	Flatweave
Pile Content	100% PP
Pile Weight	1100 gr/m ²
Total Weight	1640 gr/m ²
Total Height	5 mm
Tuft Density	70400/m ²
Widths available	4 metres
Pattern Repeat	50 (W) x 116,3 (H) cm
Light Fastness	≥ 5-6
Sound Insulation	≥ 22 dB
Tog Rating	1.2
Fire Class	E _{FL} (EN 13501-1)



37	48	85
73	83	

Available colours

INSTALLATION : Securely fix to subfloor with either the tackless gripper method with underlay or on the double stick method.

MAINTENANCE : Daily vacuum cleaning. Shampoo when necessary in accordance with manufacturer's instructions.

While every effort is made to ensure exact colour and design reproduction, we cannot, owing to method of manufacture, guarantee perfect matching. Please note that a sample may not be from the same dye batch as the current production and therefore should be used as a guide and not as an exact colour match.

Shading is a characteristic of all cut pile carpets and is not considered to be a manufacturing defect. Shades may vary from dye lot to dye lot. Experienced professional installers are essential to ensure correct installation.

THE COMPANY RESERVES THE RIGHT TO MODIFY SPECIFICATIONS AND ALTER RAW MATERIALS RELATIVE TO IMPROVING PERFORMANCE WITHOUT NOTICE.

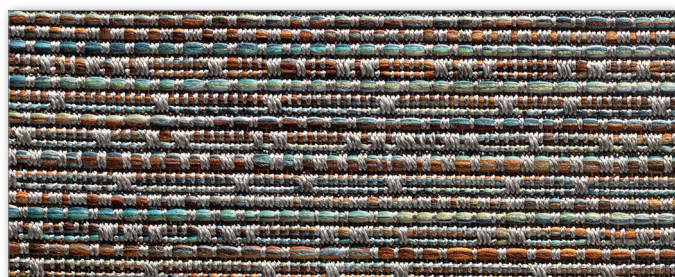
Nature Rainbow Parrot 8201



▲ 8201 / 37



▲ 8201 / 37



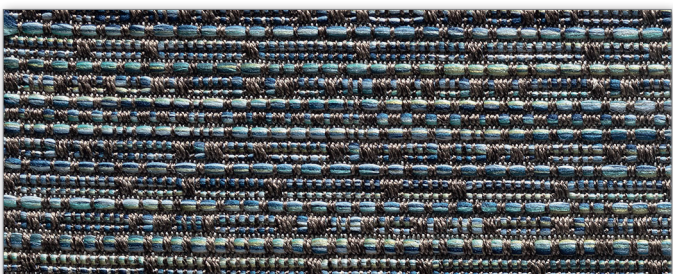
▲ 8201 / 48



▲ 2801 / 73



▲ 8201 / 83



▲ 8201 / 85